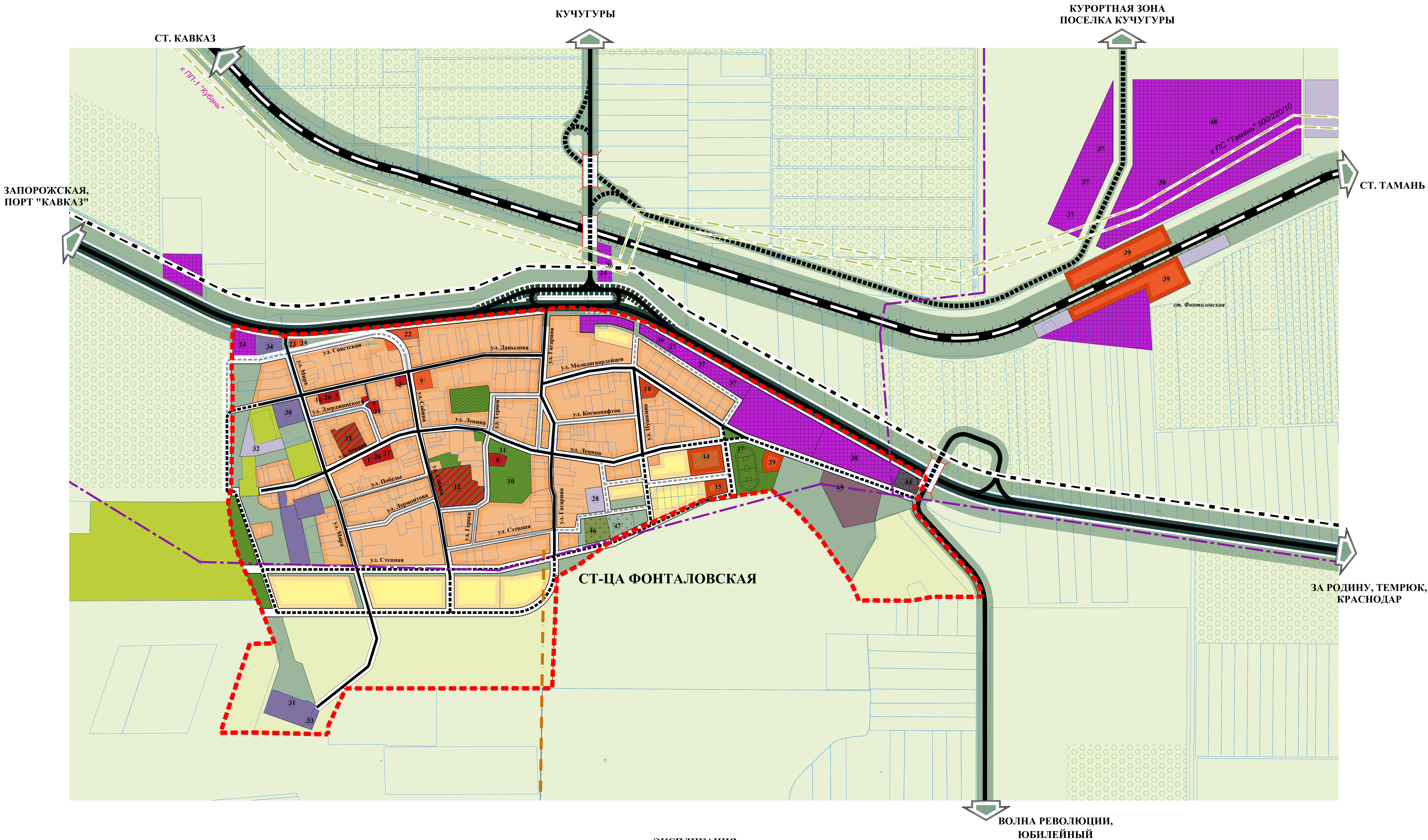
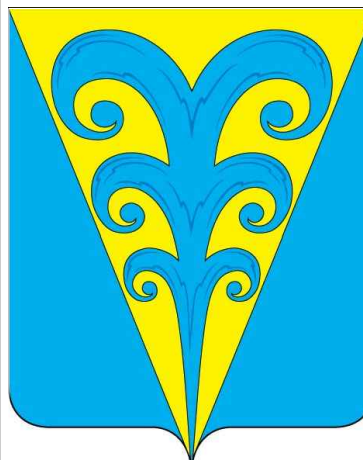


ФРАГМЕНТ ГЕНЕРАЛЬНОГО ПЛАНА ПОСЕЛЕНИЯ В ГРАНИЦАХ
СТАНИЦЫ ФОНТАЛОВСКОЙ М 1:5 000



УСЛОВНЫЕ ОБОЗНАЧЕНИЯ

Table with 2 columns: Symbol and Description. It defines various types of roads (federal, regional, main, secondary, railway), boundaries (settlement, reserve), and utility lines (power, gas, water).

Table with 2 columns: Symbol and Description. It defines different types of land use zones: sports facilities, education and healthcare, industrial and warehouse, recreational, special purpose, multifunctional, green spaces, sanitary-protective, agricultural, cemetery, and agricultural objects.

ЭКСПЛИКАЦИЯ

Table with 3 columns: No, Name, and Note. It lists administrative buildings, cultural institutions, educational facilities, and other objects within the settlement boundaries.

Table with 3 columns: No, Name, and Note. It lists objects related to housing and communal services, and other facilities like parking lots and storage areas.

Примечание: 1. Данный чертеж выполнен с учетом внесения изменений на основании муниципального контракта № 0118300002415000010 от 04 августа 2015 г.

Table with 2 columns: Symbol and Description. It defines symbols for linear objects of federal significance: power lines and optical communication lines.

Примечание: 2. Изменения внесены в генеральный план Фонталовского сельского поселения, утвержденного Решением Фонталовского сельского поселения Темрюкского района № 1305 от 18.07.2017 г.

Table with 2 main sections: Metadata (scale, date, sheet) and Project Information (project name, sheet number, project name).